

# INVESTING IN KC



## WATER MAIN REPLACEMENT

In the Area of  
Mercier Street to Woodland Lane,  
W. 90th Terrace to E. 100th Terrace

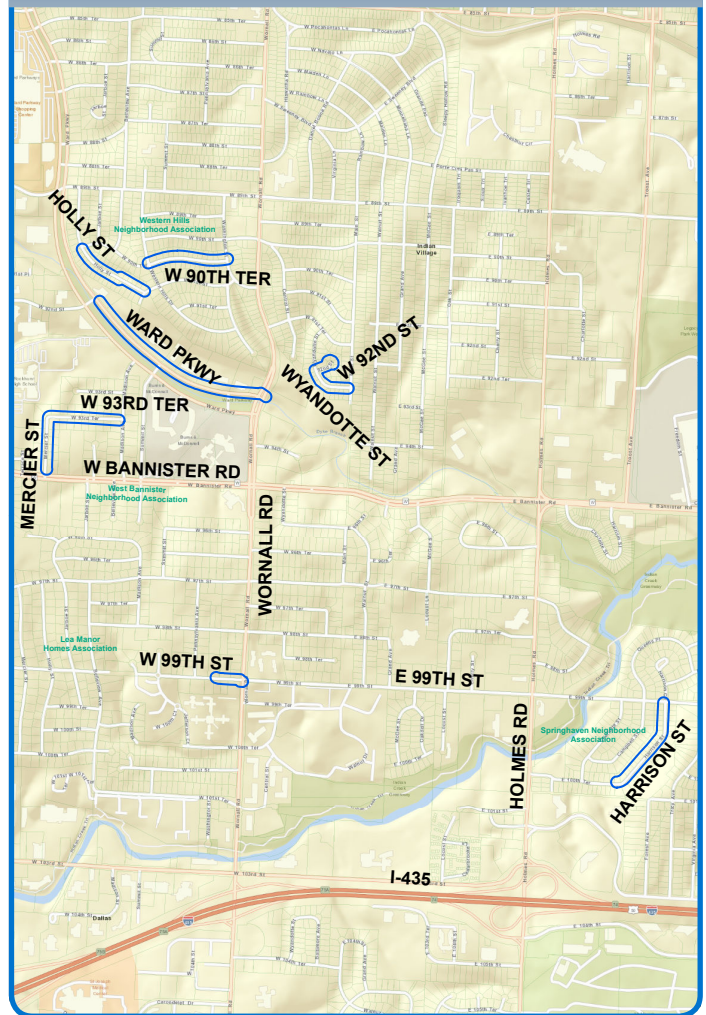
### PUBLIC MEETING

**Why:** Water Main Replacement Project

**When:** Monday, July 10, 2017  
6:00 p.m.

**Where:** Trailside Center  
9901 Holmes Road  
Kansas City, MO 64131

### PROJECT AREA



— Project Work

July 2017 to May 2018

# YOUR INVESTMENTS AT WORK

## WATER MAIN REPLACEMENT

In the Area of Mercier Street to Woodland Lane, W. 90th Terrace to E. 100th Terrace

### WHAT

- Important infrastructure work will be performed in your neighborhood.
- Water mains will be replaced and realigned throughout the project.
- More durable and, in some areas, larger water main pipes will be installed.

### WHY

- Existing water mains have experienced numerous breaks, resulting in service interruptions and related construction and traffic inconveniences for customers.

### WHEN

- Weather permitting, work will begin July 2017 and conclude May 2018.

### WHO

- KC Water in partnership with Hettinger Excavating LLC

### WHERE

- W. 90th Terrace from Western Hills Drive to Washington Street
- W. 99th Street from 420 W. 99th Street to Wornall Road
- Harrison Street from E. 99th Terrace to E. 100th Terrace
- Mercier Street from W. 93rd Terrace to W. Bannister Road
- W. 93rd Terrace from Mercier Street to Madison Avenue
- Ward Parkway from W. 92nd Street to Wornall Road
- Holly Street from W. 90th Terrace to W. 91st Street
- W. 92nd Terrace from Wyandotte Street to Main Street
- W. 92nd Street from cul de sac west of Wyandotte Street

### IMPROVEMENTS

- Fewer anticipated water main breaks
- Increased reliability
- Fewer service disruptions
- Enhanced neighborhood fire protection

### WHAT TO EXPECT

- Large equipment will be used, creating noise and dusty conditions, which will be controlled.
- Curbs, driveways, affected streets will be replaced.
- Sod will be installed during sodding season after work is completed.
- Ordinary travel routes will be temporarily restricted.

## QUESTIONS?

Specific questions about this project can be directed to:

- Kelly Finn, Project Manager, KC Water, 816-513-0351, [kelly.finn@kcmo.org](mailto:kelly.finn@kcmo.org)
- Royce Hettinger, Project Manager, Hettinger Excavating LLC, 816-786-4593, [royce@hettingerXLT.com](mailto:royce@hettingerXLT.com)
- Sean Allen, Resident Inspector, KC Water, 816-513-0318, [sean.allen@kcmo.org](mailto:sean.allen@kcmo.org)



[www.kcwaterservices.org](http://www.kcwaterservices.org)

